



Rochdale Event Guide

Saturday 7th & Sunday 8th September 2024

www.heritageopendays.org.uk

 [@heritageopenday](https://twitter.com/heritageopenday)

[#HODs](https://twitter.com/heritageopenday)

 [/heritageopendays](https://www.facebook.com/heritageopendays)

 [@heritageopendays](https://www.instagram.com/heritageopendays)

Welcome



Rochdale Railway Station

Station Rd, Rochdale, OL11 1DR

www.northernrailway.co.uk/stations/rochdale

“We are delighted to be part of the National Heritage Open Days and show off our town!

Rochdale is going through a true Renaissance, with so many places to see and things to do for all ages.

This year Rochdale Town Hall reopened its doors to the public following £20m restoration project, allowing it to operate as a tourist attraction for the first time in its 153-year history.

We have unique museums, from Fireground, where England’s first municipal fire service was formed in 1826, telling the story of firefighting in Greater Manchester; to the Rochdale Pioneers Museum, that tells the story of the first Corporative Movement that was founded.

We have fantastic hidden gems, including Voltalab Studios, the boutique recording studio used by iconic bands including Joy Division, Happy Mondays and the Stone Roses and still supports emerging artists today.

Our town is packed with passion, pride and community spirit; rich with stories, heritage and culture, some of which you will see on this trail.

We have so much to offer from our stunning countryside, lakes and parks, to amazing buildings, churches and architecture seeped in history, as well as a packed culture and events calendar throughout the year; one day won’t be enough to see everything and we look forward to welcoming you back to Rochdale again soon.”

Councillor Sue Smith

Portfolio Holder for Communities and Cooperation

Rochdale Railway Station sits along the Calder Valley Line and is approximately a 10 minute walk from Rochdale Town Centre. Those passengers travelling by train to Rochdale can use their rail ticket to hop on the tram into the town centre. Just ask the ticketing staff at the station barriers if you can retain your rail ticket in order to be able to do this. Otherwise your ticket will be swallowed up by the exit barriers at the station.

Timing of activities

Saturday: All day

Sunday: All day

The New Pioneers will bring along their community living room to welcome all-

- ‘Help to create a giant mural and enjoy live music with Culture Co-op.’
- Deeplish Community Centre will present art work from their recent heritage project, celebrating 30 years of their legacy, funded by Historic England and supported by Cartwheel Arts.

IA. Guided Heritage Walks

Starting at Rochdale Railway Station there will be guided heritage walks led by local heritage enthusiasts. The tours will lead you on a journey of discovery through the streets of Rochdale Town Centre, highlighting some of the key heritage sites, venues and attractions.

Timing of activities

Saturday: 11am and 2pm

Sunday: 12 noon

Heritage Trail 90 minute walks

These will commence from Rochdale Railway Station.
(Meet at train station entrance)

2

Fireground Museum

Old Fire Station, Maclure Road, Rochdale, OL11 1DN
www.fireground.org.uk

Fireground is Greater Manchester's Fire Service Museum and is a place to explore, preserve and make accessible the history of fire, fire engineering and the fire and rescue services in the Greater Manchester region. The museum is also an art deco gem from the 1930s.

Timing of activities

Saturday: 10am – 4pm Four tours will take place throughout the day

Guided tours of the site (usually about four tours in the day)



3

St John the Baptist RC Church

Dowling Street, Rochdale, OL11 1EX
www.stjohnthebaptistrc.org

St John the Baptist church, built in the 1920s is a grade II listed church and is part of the parish of St Gabriel and the Angels, Castleton and St John the Baptist Rochdale. It is a place of worship, where community, faith and heritage come together.

Timing of activities

Saturday: 10am – 4pm

Sunday: 12 noon – 2pm

Mosaic Artwork Talk

The Eric Newton (Oppenheimer) mosaic surrounding the high altar depicting Christ the King is dramatic and thought provoking. The mosaic was restored in 2022/23 with the help of lottery funding. The Church itself is iconic with its large white dome.



4

Rochdale Parish Church of St Chad

Church Stile, Sparrow Hill, Rochdale, OL16 1QT
www.rochdaleparishchurches.org.uk/welcome

St Chad's Church was the mother church of the ancient parish of Rochdale and was founded before 1170, possibly on an Anglo-Saxon Site. It forms part of the Diocese of Manchester and is an active place of worship and community hub for the town and outlying suburbs.

Timing of activities

Saturday: 12 noon – 1.30pm

Giant Book & Performance

Skylight Circus Arts will be telling Sparrow Hill Stories with their giant pop-up book at St Chad's Church

“Step into Rochdale's history with enchanting storytelling, bringing to life the rich tales of Sparrow Hill. A unique storytelling event bringing the past to life with a captivating pop-up book from Skylight Circus Arts.”



5

Voltalab Sound Studios

Kenion Street, Rochdale, OL16 1SN
www.voltalab.co.uk/live

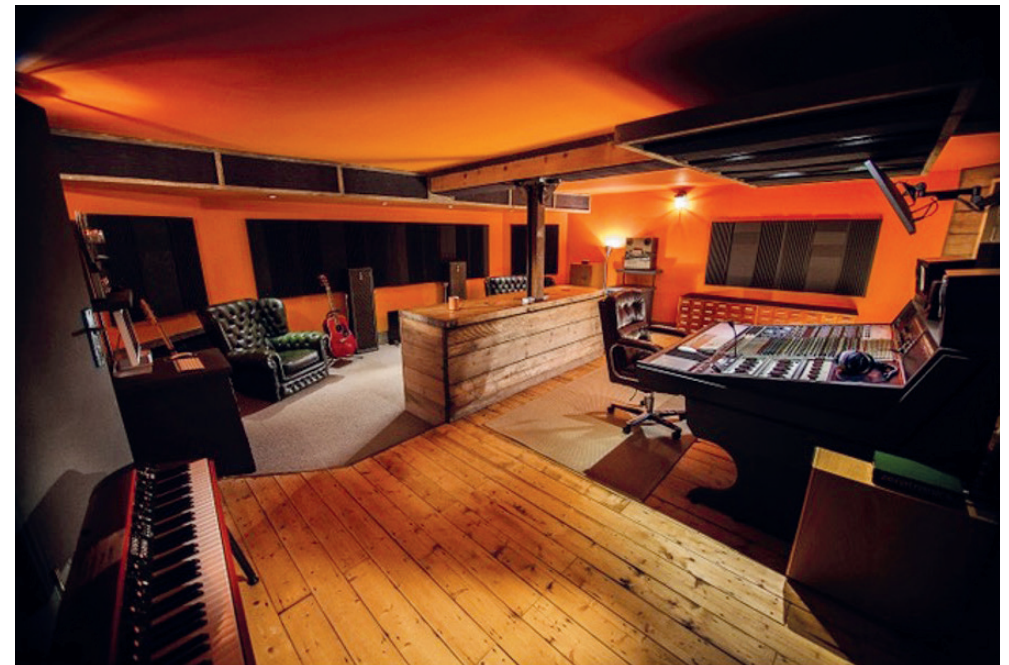
Voltalab Sound Studios opened in 1978 and is a boutique recording studio housed in the iconic Cargo building in Rochdale. The space is renowned and revered amongst music fans and recording industry professionals for some of the iconic seventies and eighties bands, which were synonymous with the Manchester music scene.

Timing of activities

Sunday: 11am – 2pm

Musical Heritage – Open Studio

Voltalab will be running an open studio to show people around the space and to learn more about its musical significance, both locally and nationally.



6

Champness Hall

Champness Hall, Drake Street, Rochdale, OL16 1PB

Champness Hall, named after Methodist Minister Thomas Champness was first opened in 1925 and is one of the largest and most grandiose Art Deco landmarks in the Borough. The site is currently used by the Methodist Church, is a major events venue and plays home to a number of charitable organisations.



Timing of activities

Saturday: 12, 1pm, 2pm 3pm

Sunday: 12, 1pm

Richard Lyson

Ten Minute Talks in reception area based on the history of the Champness Hall.

Both Days

Soul Sisters

Will be hosting an Arts Workshop in reception

Saturday only

Gemma Johnson

100th Centenary of Champness Hall – Ghost Stories & Gracie Fields Exhibition in the main hall

7

San Remo

27 Drake Street, Rochdale, OL16 1RX

A 5 star rating on TripAdvisor, you may walk past this hidden gem, but never judge a book by its cover! Frequenting by locals and visitors alike, this family ran authentic northern café opened in the 60's, you can step back in time and enjoy fantastic home cooked food, from a full English to pie, chips and gravy, with a guaranteed great food and a friendly welcome!

Timing of activities

Saturday: All Day

Sunday: 11am – 2pm

Food and drink pit stop

Offering one of the best brews and old school classic food options



8

Butterworth Brothers Jewellers

14 Drake Street, Rochdale, OL16 INT

Established in 1903, Butterworth Brothers Jewellers was one of Rochdale’s longest established family-run businesses. The building is now the temporary home of Vibe Rochdale, a charity which promotes mental health in children and young people through the creative arts.

Timing of activities

Saturday: 10am – 4pm

Sunday: 11am – 2pm

Vibe Young People’s Exhibition of artwork

Created as part of this community organisation, in the setting of Butterworth’s, the historical building and jewellers.

Local Studies Exhibition showing Drake St in times gone by.



9

King Street Setts

King Street, Rochdale

The wooden setts (cobbles) located on King Street, a back street right in the heart of Rochdale Town Centre date back to the 1800s and were believed to have been laid because there used to be a small hospital on King Street and they didn’t want to disturb the patients with the noise of horse and carriages. The wooden setts are quite unique and are believed to be made of expensive hardwood. Ordinarily these would probably have been stone cobble elsewhere.

The wooden setts located on King Street will be pointed out as part of the guided tour around the town centre.



10

Rochdale Town Hall, Rochdale Town Hall Square and Memorial Gardens

The Esplanade, Rochdale, OL16 1AZ
www.rochdaletownhall.co.uk

Rochdale Town Hall, which is one of the country's stand-out municipal buildings, designed by William Henry Crossland and built between the years of 1866 and 1871. This Grade I listed building was built in a magnificent Gothic Revival style and has recently undergone a multi-million restoration and refurbishment project.



Timing of activities

Sunday: 11am - 2pm *Please meet on the Square at The Butts.*

Due to other events, the Town Hall will not be open to the public on the weekend of the HOD festival

There will be guided walking tours of the Heritage Action Zone (HAZ). The HAZ was a heritage-led regeneration programme that was based on a partnership between Historic England and the local communities. This work was focused in and around Drake Street, Packer Street and the Butts. The tour will guide you around the HAZ pointing out various points of historic interest. This will take in the medieval bridges, The Butts, Bull Brow and Baille Street. Before winding its way back to the Town Hall, Town Hall Square and through the memorial gardens to the next location on the trail.

11

Rochdale Pioneers Museum

31 Toad Lane (off Hunters Lane), Rochdale, OL12 0NU
www.co-operativeheritage.coop

Rochdale Pioneers Museum is widely regarded as the home of the worldwide Co-operative movement and its founders. It is here in Toad Lane in 1844, that the Rochdale Equitable Pioneers Society opened their first little store selling food at fair prices and honest weights and measures.



Timing of activities

Saturday: 10:30am – 4pm

Temperance Bar Visit and tour of the Pioneers Museum

The Museum will be operating a pop-up Temperance bar in the courtyard at the front of the building. This is to mark the 180th anniversary since the Rochdale Principles of co-operation were created.

People can have a go at identifying herbal ingredients and try a traditional non-alcoholic beverage as part of the festival as the Pioneers had an ambition (which they were never able to achieve) to open a temperance bar in 1844 to improve the wellbeing of working class people.

Participants of the Rochdale Town Centre's Real Ale Trail organised by Rochdale BID, will also be able to collect their trail passports from the venue. Offering more than 100 different types of ale and ciders you can expect to find some of CAMRA's finest beers and real ales dotted along the trail.

12

The Baum Public House

33-37 Toad Lane (off Hunters Lane), Rochdale, OL12 0NU
www.thebaum.co.uk

The Baum Pub situated in the town's historic conservation area and located on Toad Lane is a classic, cosy pub serving nostalgic British pub classics.

Timing of activities

Saturday: 12pm – 4pm

Sunday: 12pm – 2pm

Live music and great food



13

The Church of St Mary-in-the-Baum

10 Howard Place, Rochdale, OL16 1DZ
www.rochdaleparishchurches.org.uk/welcome

The Church of St-Mary's-in-the-Baum originated in 1738 when a subscription deed outlined the need for a 'chapel of relief' in Rochdale due to the growing numbers of parishioners.

Timing of activities

Saturday: 10am – 4pm

Sunday: 11am – 2pm

Poetry and songs by Lancashire Dialect Alison Cooper.

Rochdale Town Centre Trail 1900

A live interactive map that navigates around the streets of Rochdale town centre in 1900 will be shown on a large screen within the church by its creator, local resident Richard Lord.





Rochdale Event Guide

Saturday 7th & Sunday 8th September 2024



ROCHDALE
BOROUGH COUNCIL



Funded by
UK Government

**GREATER
MANCHESTER**
DOING THINGS DIFFERENTLY

www.heritageopendays.org.uk

 @heritageopenday

#HODs

 /heritageopendays

 @heritageopendays